

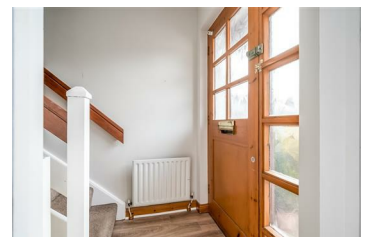


20 Sally Gardens, Newtownabbey, BT36 5HR

£825 Per Month



Well presented, two bedroom (plus study) mid town house property with private driveway area and low maintenance, fully enclosed rear garden, located within the popular and conveniently situated Sally Gardens development, Ballyclare Road, Glengormley. The property comprises entrance hall, lounge with open fire, modern fitted kitchen with informal dining area, two well proportioned bedrooms, study, and bathroom with white three-piece suite. Externally the property enjoys private driveway area to front and fully enclosed, low maintenance, paved rear garden. Other attributes include recently installed gas fired central heating and being part furnished. Early viewing highly recommended to avoid disappointment.



INVESTORS IN PEOPLE
We invest in people Gold

PRS Property Redress Scheme

Proudly sponsoring



Awards



WE ARE MACMILLAN.
CANCER SUPPORT