

6IX

ALEXANDRA
PARK AVENUE
— BELFAST —

PHASE 3

ALEXANDRA PARK AVENUE

— SITE LAYOUT —



Site layout not to scale and is for illustration purposes only / CGI for illustration purposes only



THE BYRNE and
THE ABBOTT



THE CORNWELL



THE ABBOTT

**COLIN
GRAHAM
RESIDENTIAL**

028 90 832 832
colingrahamresidential.com



028 9068 2777
pinpointproperty.com

**BlueHouse
Development**

bluehousedevlopment.com

6IX

ALEXANDRA
PARK AVENUE
— BELFAST —



CGI shown for illustration purposes only

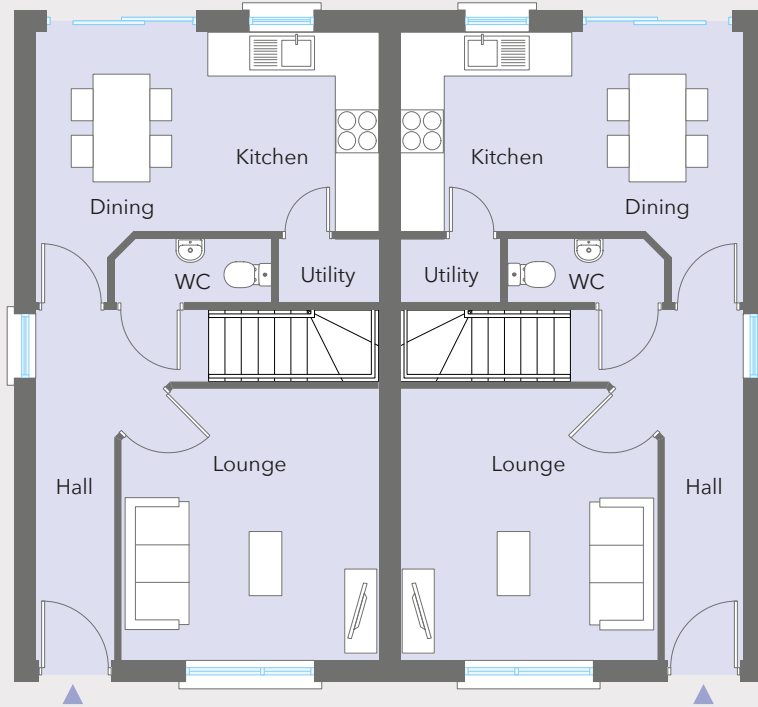
THE ABBOTT

3 BED SEMI DETACHED | c. 920 sq ft / 85.4 sq m approx

6IX

ALEXANDRA
PARK AVENUE
— BELFAST —

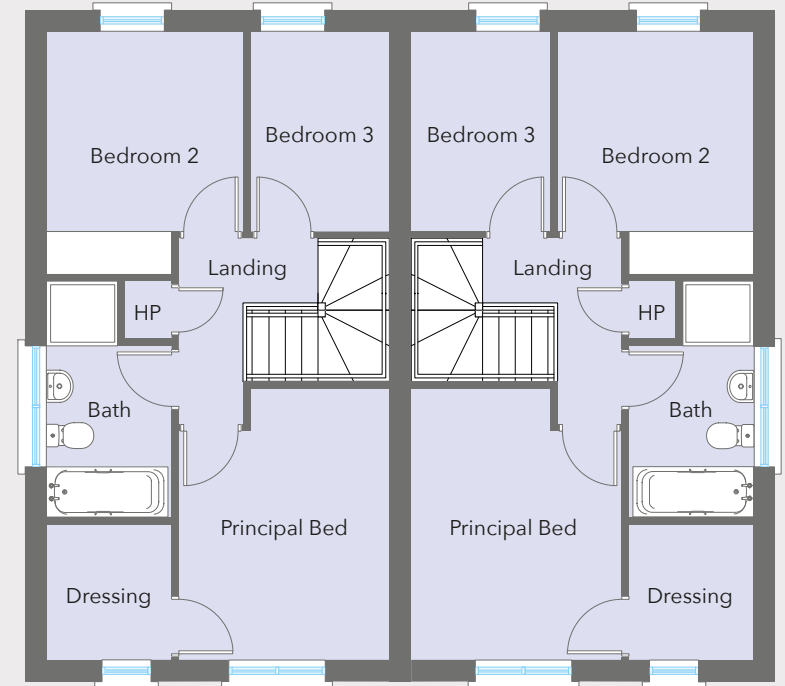
GROUND FLOOR



GROUND FLOOR

Entrance Hall with separate WC				
Lounge	ft	12'5" x 11'9"	m	3.80 x 3.60
Kitchen Dining	ft	15'9" x 9'4"	m	4.83 x 2.84
Utility	ft	4'8" x 2'10"	m	1.45 x 0.90

FIRST FLOOR



Floor plans are not to scale and all dimensions are approximate

FIRST FLOOR

Principal Bedroom	ft	12'5" x 9'10"	m	3.80 x 3.03
Dressing	ft	5'9" x 5'6"	m	1.80 x 1.70
Bedroom 2	ft	11'3" x 9'1"	m	3.44 x 2.75
Bedroom 3	ft	9'4" x 6'5"	m	2.84 x 1.98
Bathroom	ft	11'2" x 5'6"	m	3.39 x 1.70

THE ABBOTT

3 BED SEMI DETACHED | c. 920 sq ft / 85.4 sq m approx

**COLIN
GRAHAM
RESIDENTIAL**
028 90 832 832
colingrahamresidential.com

pinpoint.
028 9068 2777
pinpointproperty.com

**BlueHouse
Development**
bluehousedevlopment.com



THE BYRNE

THE ABBOTT

6IX
ALEXANDRA
PARK AVENUE
— BELFAST —

CGI shown for illustration purposes only

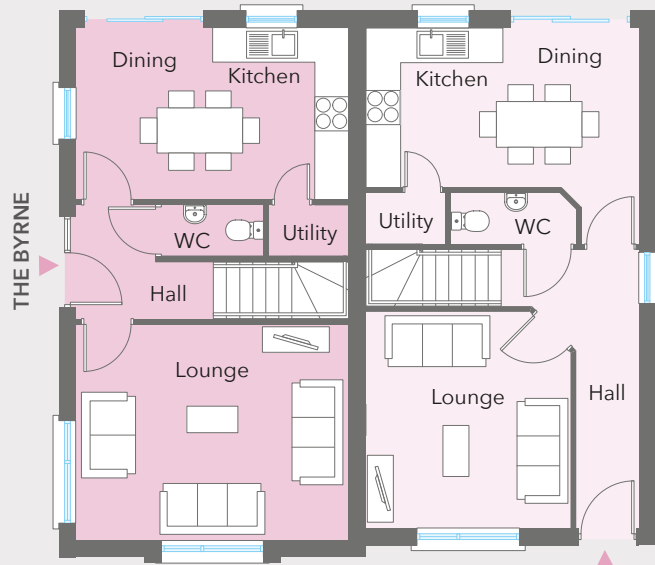
THE BYRNE and THE ABBOTT

3 BED SEMI DETACHED | THE BYRNE c. 943 sq ft / 87.6 sq m approx | THE ABBOTT c. 920 sq ft / 85.4 sq m approx

6IX

ALEXANDRA
PARK AVENUE
— BELFAST —

GROUND FLOOR



THE BYRNE

THE ABBOTT

GROUND FLOOR | THE BYRNE

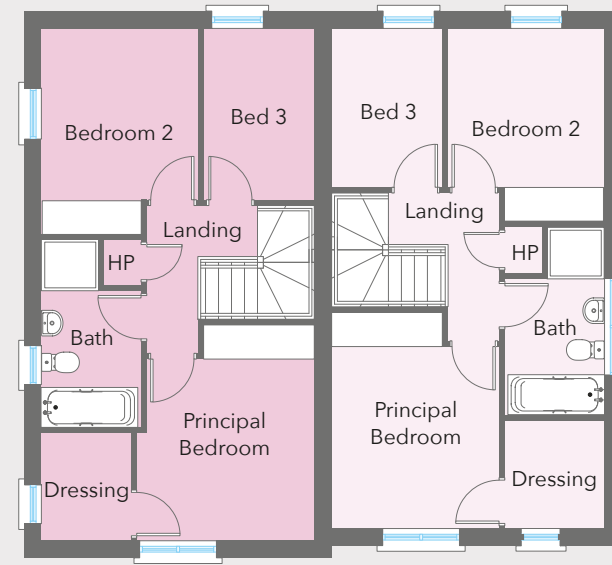
Entrance Hall with separate WC

Lounge	ft	15'9" x 12'7"	m	4.83 x 3.85
Kitchen Dining	ft	15'9" x 9'4"	m	4.83 x 2.84
Utility	ft	4'8" x 2'10"	m	1.45 x 0.90

FIRST FLOOR

Principal Bedroom	ft	12'7" x 10'6"	m	3.87 x 3.23
Dressing	ft	6'7" x 4'10"	m	2.02 x 1.50
Bedroom 2	ft	11'9" x 9'1"	m	3.60 x 2.75
Bedroom 3	ft	9'10" x 6'5"	m	3.00 x 1.98
Bathroom	ft	10'7" x 5'6"	m	3.24 x 1.70

FIRST FLOOR



Floor plans are not to scale and all dimensions are approximate

GROUND FLOOR | THE ABBOTT

Entrance Hall with separate WC

Lounge	ft	12'5" x 11'9"	m	3.80 x 3.60
Kitchen Dining	ft	15'9" x 9'4"	m	4.83 x 2.84
Utility	ft	4'8" x 2'10"	m	1.45 x 0.90

FIRST FLOOR

Principal Bedroom	ft	12'5" x 9'10"	m	3.80 x 3.03
Dressing	ft	5'9" x 5'6"	m	1.80 x 1.70
Bedroom 2	ft	11'3" x 9'1"	m	3.44 x 2.75
Bedroom 3	ft	9'4" x 6'5"	m	2.84 x 1.98
Bathroom	ft	11'2" x 5'6"	m	3.39 x 1.70

THE BYRNE and THE ABBOTT

3 BED SEMI DETACHED | THE BYRNE c. 943 sq ft / 87.6 sq m approx

| THE ABBOTT c. 920 sq ft / 85.4 sq m approx

**COLIN
GRAHAM
RESIDENTIAL**
028 90 832 832
colingrahamresidential.com

pinpoint.
028 9068 2777
pinpointproperty.com

**BlueHouse
Development**
bluehousedevlopment.com

6IX

ALEXANDRA
PARK AVENUE
— BELFAST —



CGI shown for illustration purposes only

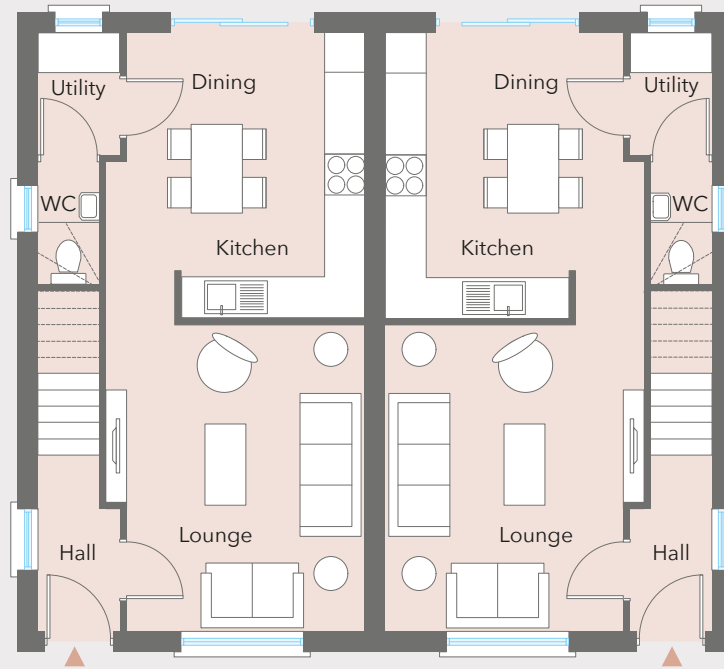
THE CORNWELL

3 BED SEMI DETACHED | c. 920 sq ft / 85.4 sq m approx

6IX

ALEXANDRA
PARK AVENUE
— BELFAST —

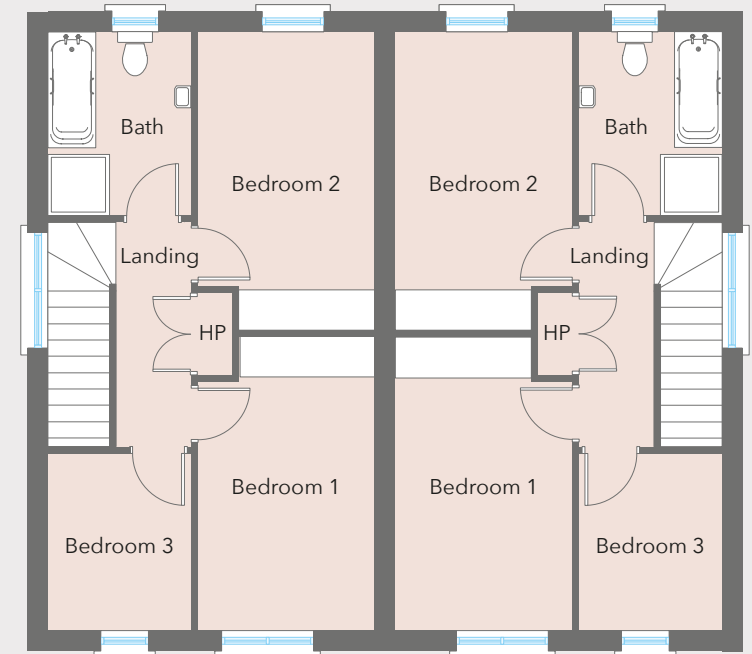
GROUND FLOOR



GROUND FLOOR

Entrance Hall			
Lounge	ft	15'3" x 11'6"	m 4.64 x 3.53
Kitchen Dining	ft	13'5" x 11'6"	m 4.10 x 3.53
Utility	ft	6'1" x 3'10"	m 1.84 x 1.20
WC			

FIRST FLOOR



Floor plans are not to scale and all dimensions are approximate

FIRST FLOOR

Bedroom 1	ft	14'2" x 8'7"	m	4.31 x 2.63
Bedroom 2	ft	14'6" x 8'7"	m	4.43 x 2.63
Bedroom 3	ft	8'6" x 6'10"	m	2.60 x 2.10
Bathroom	ft	9'1" x 6'10"	m	2.75 x 2.10

THE CORNWELL

3 BED SEMI DETACHED | c. 920 sq ft / 85.4 sq m approx



028 90 832 832
colingrahamresidential.com



028 9068 2777
pinpointproperty.com



bluehousedevlopment.com